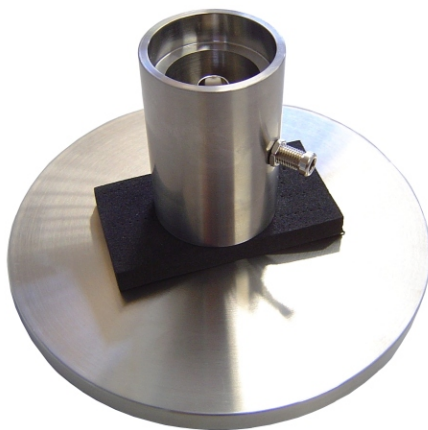


## High Ohm Guard Ring Electrode

# FE 25

for measurement of volume and surface resistance according to standard DIN EN IEC 62631 and others



GP 14 (optional)

- ▶ high grade steel quality (V2A)
- ▶ measuring area diameter: 25 mm
- ▶ diameter of guard ring: 40 mm outside  
Top side: 35 mm inside  
Underside: 27 mm inside
- ▶ resulting measuring gap: 5 mm or 1 mm
- ▶ effective measuring area for measurement of volume resistance: 5,31 cm<sup>2</sup> (1 mm gap)
- ▶ max. test voltage: 500 V
- ▶ recommended measuring range:
 

at 100 V test voltage	10 <sup>5</sup> to 10 <sup>15</sup> Ohm
at 500 V test voltage	10 <sup>6</sup> to 10 <sup>15</sup> Ohm
at 1 V test voltage	10 <sup>3</sup> to 10 <sup>13</sup> Ohm

**Accessories:**

- base plate GP 14
- High-Ohm Measuring cable set
- High ohm calibration box, high ohm calibration resistors
- Conductive elastomer
- Conductive gel

The guard ring electrode FE 25 is suitable for versatile measuring of volume and surface resistance.

In connection with measuring instrument series **Milli-TO** precise measuring in the high ohm range are possible.

Because of the small dimension the FE 25 is suited for smaller specimen objects very well. She is used everywhere there where the standard electrode FE 50 is too big.

Because of the special construction of the guard ring measuring is possible with 5 mm and 1 mm measuring gap.

For quick and easy checking of the measurement accuracy, we recommend our high-ohm calibration box KB-FE25 in connection with our high-ohm calibration resistors.



surface measurement with grounded baseplate GP 14 (optional) and Milli-TO 3 (optional)

